

# MOHAWK

## PARALLELOGRAM

### 36-28-F FLUSH MOUNT INSTALLATION REQUIREMENT DRAWINGS



## MOHAWK RESOURCES LTD.

65 VROOMAN AVE.

AMSTERDAM, NY 12010

TOLL FREE: 1-800-833-2006

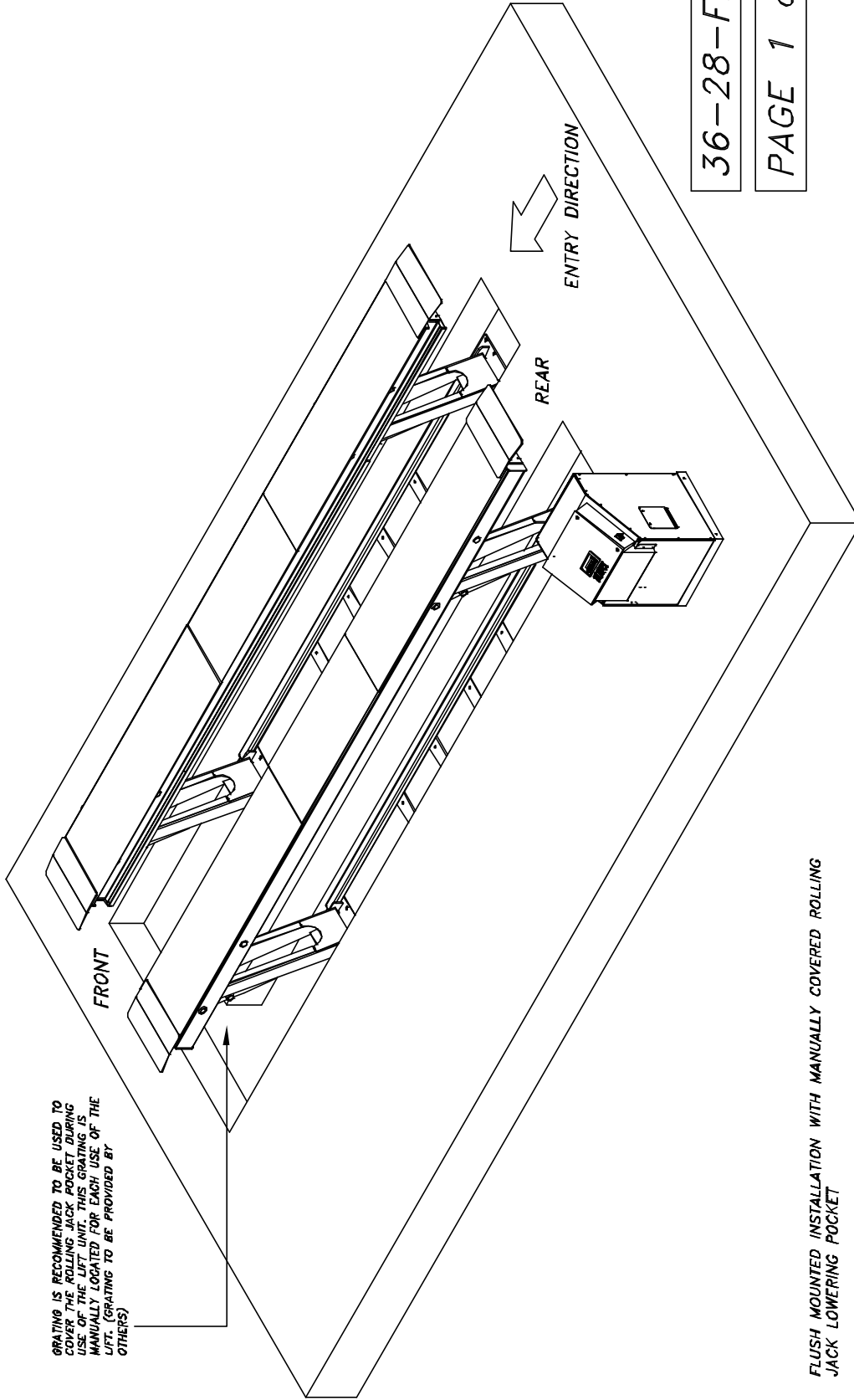
LOCAL: 1-518-842-1431

FAX: 1-518-842-1289

INTERNET: [WWW.MOHAWKLIFTS.COM](http://WWW.MOHAWKLIFTS.COM)

E-MAIL: [SERVICE@MOHAWKLIFTS.COM](mailto:SERVICE@MOHAWKLIFTS.COM)

GRATING IS RECOMMENDED TO BE USED TO COVER THE ROLLING JACK POCKET DURING USE OF THE LIFT UNIT. THIS GRATING IS MANUALLY LOCATED FOR EACH USE OF THE LIFT. (GRATING TO BE PROVIDED BY OTHERS)



36-28-FLUSH

PAGE 1 of 2

FLUSH MOUNTED INSTALLATION WITH MANUALLY COVERED ROLLING JACK LOWERING POCKET

THIS CONFIGURATION IS MOST OFTEN USED FOR FLEET MAINTENANCE APPLICATIONS THAT INVOLVE A MODERATE RATIO OF TIRE, WHEEL OR BRAKE SERVICES.

THE FRONT OF THE LIFT UNIT IS PLACED TO THE FRONT OF THE LIFT TRENCH. FOR THIS INSTALLATION, THE LIFT UNIT WILL TRANSLATE TO THE REAR AS IT ARTICULATES UPWARD. ALLOW APPROXIMATELY 60 INCHES AT THE REAR OF THE LIFT FOR THIS MOTION.

D-50E

ITEM	NAME	DESCRIPTION	QTY	MATERIAL	VENDOR	NOTE	MASS	PRICE
6	P-1010-D-008	Flush Installation General Notes	1					
6	P-1010-D-008	Service Log Board Details	1					
4	P-1010-D-004	Anchor Details & Shimming	1					
3	P-1010-D-003	Control Console & Start-Up Details	1					
2	P-1010-D-002	Roller LIFT DATA, 180° & 270°	1					
1	P-1010-D-001	Roller LIFT DATA, 180° & 270°	1					

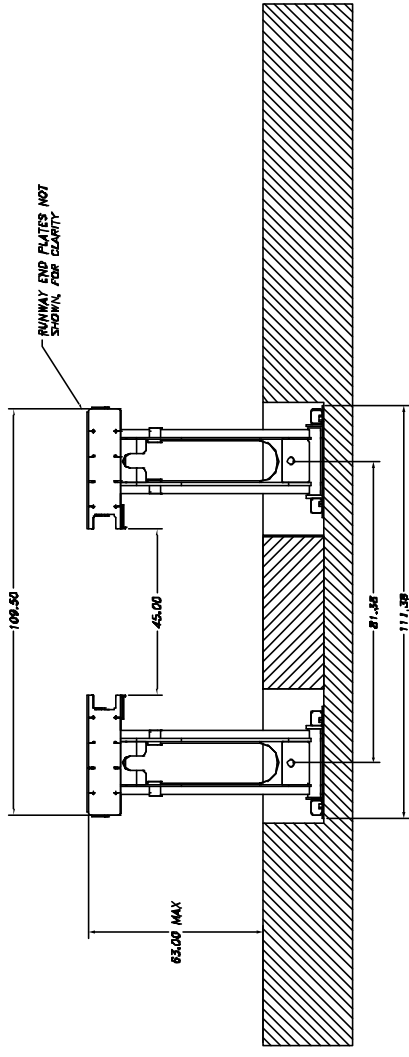
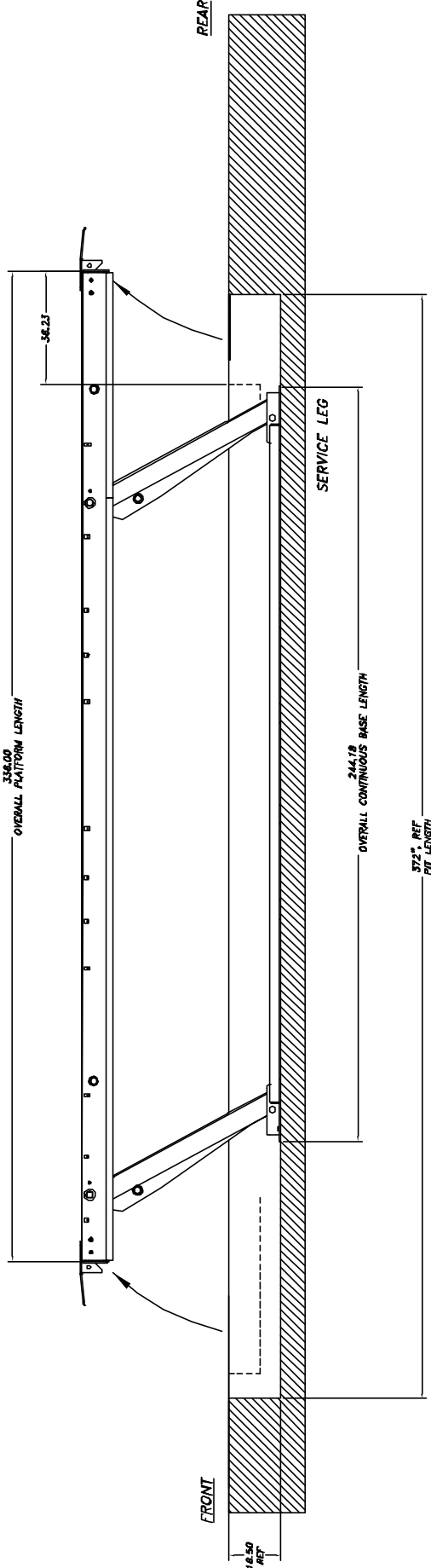
  

PARTS LIST		DATE	BY
TESTED	1/78		
CHECKED			
APPROVED			
VENDOR			
DATE	1/29/78		
FILE NAME	P-2010-A-001		
FILE NO.			
REV			
DESCRIPTION	MOHAWK RESOURCES LTD.		
TITLE	INSTALLATION REQUIREMENTS		
DRAWING NUMBER	36-28-FLUSH		
DRAWING NUMBER	P-2010-A-001		

NOTICE OF CONFIDENTIAL INFORMATION  
 THIS DRAWING IS THE PROPERTY OF MOHAWK RESOURCES LTD. IT IS TO BE USED ONLY FOR THE PROJECT AND LOCATION SPECIFICALLY IDENTIFIED IN THE DRAWING. IT IS NOT TO BE REPRODUCED, COPIED, OR TRANSMITTED IN ANY FORM OR BY ANY MEANS, ELECTRONIC OR MECHANICAL, INCLUDING PHOTOCOPYING, RECORDING, OR BY ANY INFORMATION STORAGE AND RETRIEVAL SYSTEM.

NOTES:  
 1. REMOVE ALL SHARP CORNERS & EDGES.  
 2. UNLESS OTHERWISE SPECIFIED, SURFACE FINISH SHALL BE AS SHOWN.  
 3. WELDING SHALL BE TO THE REQUIREMENTS OF THE WELDING SPECIFICATIONS TO CANADIAN STANDARDS FOR WELDING OF STEEL.  
 4. WELDING SHALL BE TO THE REQUIREMENTS OF THE WELDING SPECIFICATIONS TO CANADIAN STANDARDS FOR WELDING OF STEEL.  
 5. WELDING SHALL BE TO THE REQUIREMENTS OF THE WELDING SPECIFICATIONS TO CANADIAN STANDARDS FOR WELDING OF STEEL.

MOHAWK RESOURCES LTD.  
 INSTALLATION REQUIREMENTS  
 DRAWING: 36-28-FLUSH  
 P-2010-A-001



36-28-FLUSH

PAGE 2 of 2

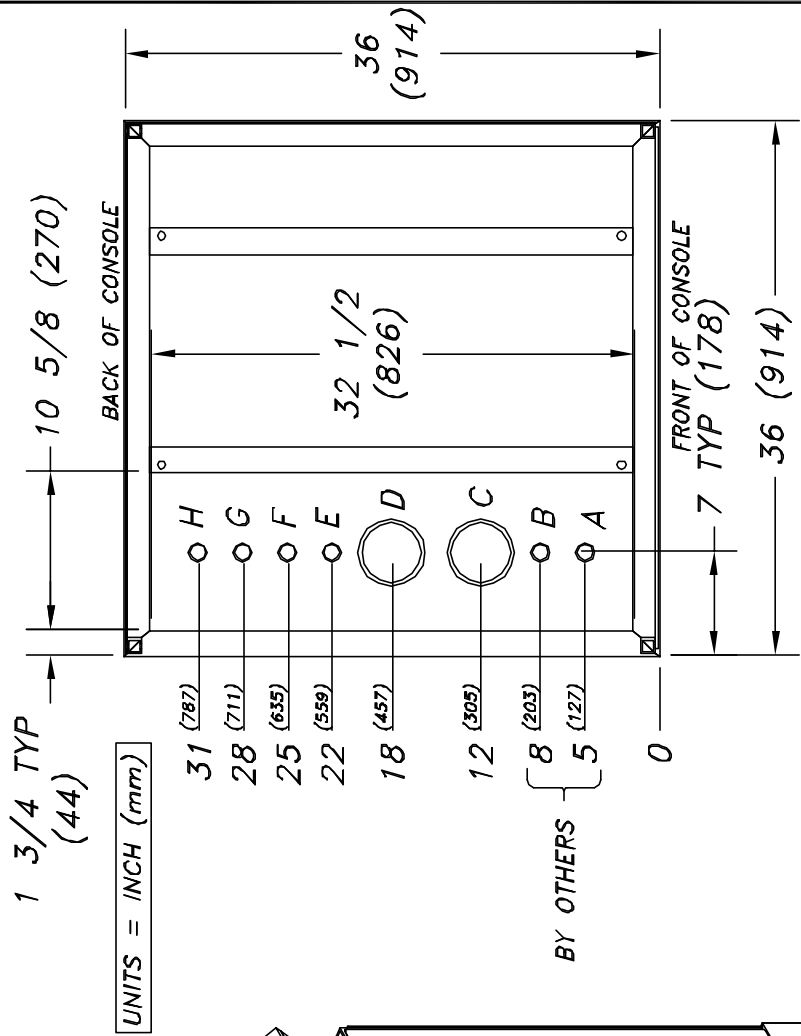
<b>NOTICE OF CONFIDENTIAL INFORMATION</b> THIS DRAWING IS THE PROPERTY OF MOHAWK RESOURCES LTD. AND IS NOT TO BE REPRODUCED OR TRANSMITTED IN ANY FORM OR BY ANY MEANS, ELECTRONIC OR MECHANICAL, INCLUDING PHOTOCOPYING, RECORDING, OR BY ANY INFORMATION STORAGE AND RETRIEVAL SYSTEM, WITHOUT THE WRITTEN PERMISSION OF MOHAWK RESOURCES LTD.		TITLE RANGES 1. 101 2. 102 3. 103 4. 104 5. 105 6. 106 7. 107 8. 108 9. 109 10. 110 11. 111 12. 112 13. 113 14. 114 15. 115 16. 116 17. 117 18. 118 19. 119 20. 120 21. 121 22. 122 23. 123 24. 124 25. 125 26. 126 27. 127 28. 128 29. 129 30. 130 31. 131 32. 132 33. 133 34. 134 35. 135 36. 136 37. 137 38. 138 39. 139 40. 140 41. 141 42. 142 43. 143 44. 144 45. 145 46. 146 47. 147 48. 148 49. 149 50. 150 51. 151 52. 152 53. 153 54. 154 55. 155 56. 156 57. 157 58. 158 59. 159 60. 160 61. 161 62. 162 63. 163 64. 164 65. 165 66. 166 67. 167 68. 168 69. 169 70. 170 71. 171 72. 172 73. 173 74. 174 75. 175 76. 176 77. 177 78. 178 79. 179 80. 180 81. 181 82. 182 83. 183 84. 184 85. 185 86. 186 87. 187 88. 188 89. 189 90. 190 91. 191 92. 192 93. 193 94. 194 95. 195 96. 196 97. 197 98. 198 99. 199 100. 200	FILE NAME P-2010-A-001	P-2010-	DATE 1/27/06	DRAWN PNY7089	APPROVED [Signature]	MOHAWK RESOURCES LTD. INSTALLATION REQUIREMENTS DRAWING 36-28-FLUSH	DRAWING NUMBER P-2010-A-001	FROM [Blank]	LIA [Blank]	NEXT ASSEMBLY [Blank]
---	--	--	---------------------------	---------	-----------------	------------------	-------------------------	---	--------------------------------	-----------------	----------------	--------------------------

FRONT ELEVATION VIEW

D-SIZE

#	DESCRIPTION	DATE	APPROVED
A	MOCKUP UNIT# 00001	07/27/2017	REVISED

TOP VIEW OF CONSOLE FRAME



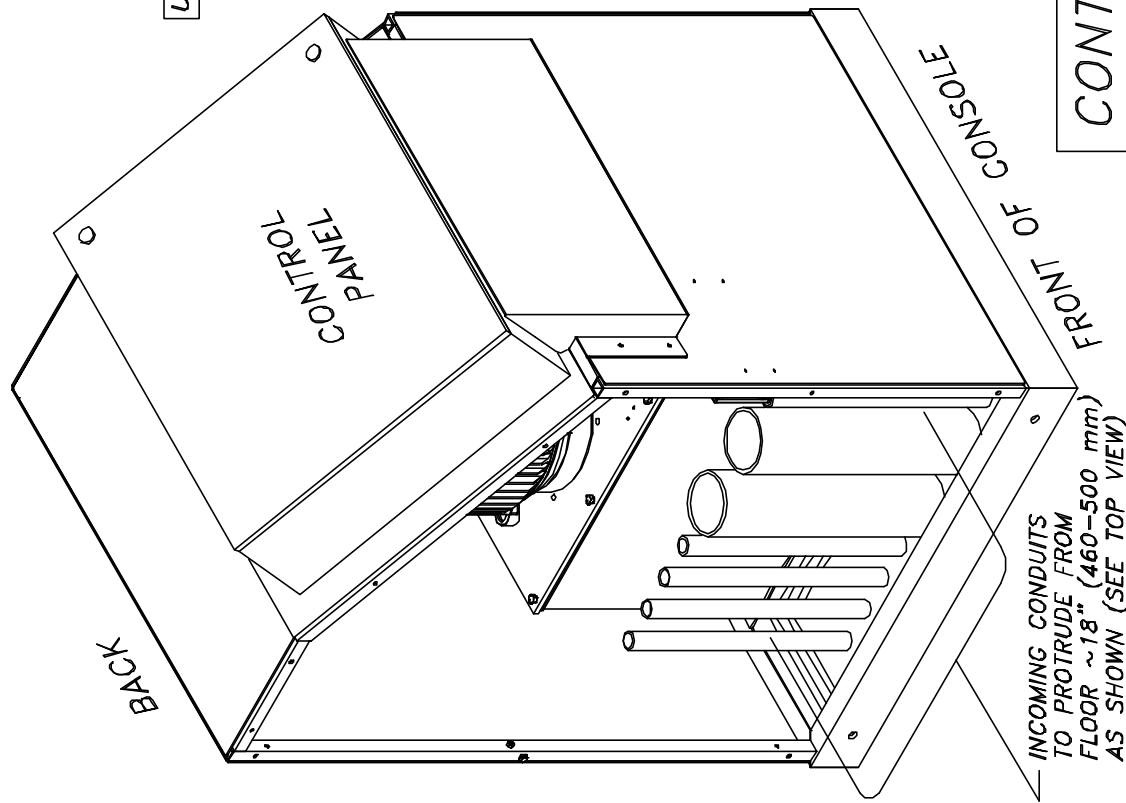
UNITS = INCH (mm)

BY OTHERS { 8 (203) 5 (127)

CONDUIT SIZES & APPLICATION:

- A: 1" (MIN) SCHED 40 STEEL PIPE - INCOMING POWER PREFERENCE
- B: 1" (MIN) SCHED 40 STEEL PIPE - INCOMING AIRLINE OPTIONAL
- C,D: 4" SCHED 40 PVC PIPE - HYDRAULIC & AIR TO LIFT
- E,F,G,H: 1" (MIN) SCHED 40 STEEL PIPE - ELECTRICAL TO LIFT

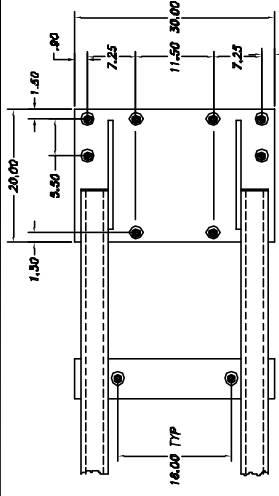
\* NOTE: USE SMOOTH ELECTRICAL 90'S IN CONDUITS, NOT PLUMBING 90'S !!



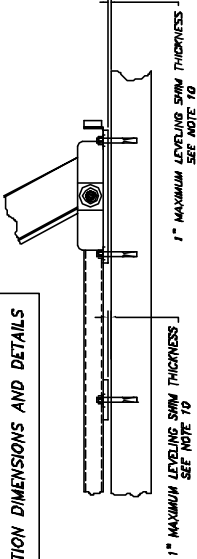
CONTROL CONSOLE & STUB-UP DETAILS

NOTICE OF CONFIDENTIAL INFORMATION	NOTES	TELEPHONE: P-070-4-001	SCALE	DRAWN	APPROVED	TITLE	MOHAWK RESOURCES LTD.
REVISIONS:	1. REVISE ALL DIMENSIONS & DIMENSIONS TO BE 1/8" MIN. UNLESS SPECIFIED OTHERWISE.	1. 1/8" ± 0.001	1:1	000	000	CONTROL CONSOLE & STUB-UP DETAILS	MOHAWK RESOURCES LTD.
2. FINISH TO BE 1/8" MIN.	3. VOLUME WEIGHT SHALL COMPLY TO AISC E-7011 CODE 3.3 PLAIN END, VASE ONLY.	2. 1/16" ± 0.002	1:2	000	000	CONTROL CONSOLE & STUB-UP DETAILS	MOHAWK RESOURCES LTD.
3. VOLUME WEIGHT SHALL COMPLY TO AISC E-7011 CODE 3.3 PLAIN END, VASE ONLY.		3. 1/32" ± 0.003	1:4	000	000	CONTROL CONSOLE & STUB-UP DETAILS	MOHAWK RESOURCES LTD.
4. VOLUME WEIGHT SHALL COMPLY TO AISC E-7011 CODE 3.3 PLAIN END, VASE ONLY.		4. 1/64" ± 0.004	1:8	000	000	CONTROL CONSOLE & STUB-UP DETAILS	MOHAWK RESOURCES LTD.
5. VOLUME WEIGHT SHALL COMPLY TO AISC E-7011 CODE 3.3 PLAIN END, VASE ONLY.		5. 1/128" ± 0.005	1:16	000	000	CONTROL CONSOLE & STUB-UP DETAILS	MOHAWK RESOURCES LTD.
6. VOLUME WEIGHT SHALL COMPLY TO AISC E-7011 CODE 3.3 PLAIN END, VASE ONLY.		6. 1/256" ± 0.006	1:32	000	000	CONTROL CONSOLE & STUB-UP DETAILS	MOHAWK RESOURCES LTD.
7. VOLUME WEIGHT SHALL COMPLY TO AISC E-7011 CODE 3.3 PLAIN END, VASE ONLY.		7. 1/512" ± 0.007	1:64	000	000	CONTROL CONSOLE & STUB-UP DETAILS	MOHAWK RESOURCES LTD.
8. VOLUME WEIGHT SHALL COMPLY TO AISC E-7011 CODE 3.3 PLAIN END, VASE ONLY.		8. 1/1024" ± 0.008	1:128	000	000	CONTROL CONSOLE & STUB-UP DETAILS	MOHAWK RESOURCES LTD.
9. VOLUME WEIGHT SHALL COMPLY TO AISC E-7011 CODE 3.3 PLAIN END, VASE ONLY.		9. 1/2048" ± 0.009	1:256	000	000	CONTROL CONSOLE & STUB-UP DETAILS	MOHAWK RESOURCES LTD.
10. VOLUME WEIGHT SHALL COMPLY TO AISC E-7011 CODE 3.3 PLAIN END, VASE ONLY.		10. 1/4096" ± 0.010	1:512	000	000	CONTROL CONSOLE & STUB-UP DETAILS	MOHAWK RESOURCES LTD.
11. VOLUME WEIGHT SHALL COMPLY TO AISC E-7011 CODE 3.3 PLAIN END, VASE ONLY.		11. 1/8192" ± 0.011	1:1024	000	000	CONTROL CONSOLE & STUB-UP DETAILS	MOHAWK RESOURCES LTD.
12. VOLUME WEIGHT SHALL COMPLY TO AISC E-7011 CODE 3.3 PLAIN END, VASE ONLY.		12. 1/16384" ± 0.012	1:2048	000	000	CONTROL CONSOLE & STUB-UP DETAILS	MOHAWK RESOURCES LTD.
13. VOLUME WEIGHT SHALL COMPLY TO AISC E-7011 CODE 3.3 PLAIN END, VASE ONLY.		13. 1/32768" ± 0.013	1:4096	000	000	CONTROL CONSOLE & STUB-UP DETAILS	MOHAWK RESOURCES LTD.
14. VOLUME WEIGHT SHALL COMPLY TO AISC E-7011 CODE 3.3 PLAIN END, VASE ONLY.		14. 1/65536" ± 0.014	1:8192	000	000	CONTROL CONSOLE & STUB-UP DETAILS	MOHAWK RESOURCES LTD.
15. VOLUME WEIGHT SHALL COMPLY TO AISC E-7011 CODE 3.3 PLAIN END, VASE ONLY.		15. 1/131072" ± 0.015	1:16384	000	000	CONTROL CONSOLE & STUB-UP DETAILS	MOHAWK RESOURCES LTD.
16. VOLUME WEIGHT SHALL COMPLY TO AISC E-7011 CODE 3.3 PLAIN END, VASE ONLY.		16. 1/262144" ± 0.016	1:32768	000	000	CONTROL CONSOLE & STUB-UP DETAILS	MOHAWK RESOURCES LTD.
17. VOLUME WEIGHT SHALL COMPLY TO AISC E-7011 CODE 3.3 PLAIN END, VASE ONLY.		17. 1/524288" ± 0.017	1:65536	000	000	CONTROL CONSOLE & STUB-UP DETAILS	MOHAWK RESOURCES LTD.
18. VOLUME WEIGHT SHALL COMPLY TO AISC E-7011 CODE 3.3 PLAIN END, VASE ONLY.		18. 1/1048576" ± 0.018	1:131072	000	000	CONTROL CONSOLE & STUB-UP DETAILS	MOHAWK RESOURCES LTD.
19. VOLUME WEIGHT SHALL COMPLY TO AISC E-7011 CODE 3.3 PLAIN END, VASE ONLY.		19. 1/2097152" ± 0.019	1:262144	000	000	CONTROL CONSOLE & STUB-UP DETAILS	MOHAWK RESOURCES LTD.
20. VOLUME WEIGHT SHALL COMPLY TO AISC E-7011 CODE 3.3 PLAIN END, VASE ONLY.		20. 1/4194304" ± 0.020	1:524288	000	000	CONTROL CONSOLE & STUB-UP DETAILS	MOHAWK RESOURCES LTD.
21. VOLUME WEIGHT SHALL COMPLY TO AISC E-7011 CODE 3.3 PLAIN END, VASE ONLY.		21. 1/8388608" ± 0.021	1:1048576	000	000	CONTROL CONSOLE & STUB-UP DETAILS	MOHAWK RESOURCES LTD.
22. VOLUME WEIGHT SHALL COMPLY TO AISC E-7011 CODE 3.3 PLAIN END, VASE ONLY.		22. 1/16777216" ± 0.022	1:2097152	000	000	CONTROL CONSOLE & STUB-UP DETAILS	MOHAWK RESOURCES LTD.
23. VOLUME WEIGHT SHALL COMPLY TO AISC E-7011 CODE 3.3 PLAIN END, VASE ONLY.		23. 1/33554432" ± 0.023	1:4194304	000	000	CONTROL CONSOLE & STUB-UP DETAILS	MOHAWK RESOURCES LTD.
24. VOLUME WEIGHT SHALL COMPLY TO AISC E-7011 CODE 3.3 PLAIN END, VASE ONLY.		24. 1/67108864" ± 0.024	1:8388608	000	000	CONTROL CONSOLE & STUB-UP DETAILS	MOHAWK RESOURCES LTD.
25. VOLUME WEIGHT SHALL COMPLY TO AISC E-7011 CODE 3.3 PLAIN END, VASE ONLY.		25. 1/134217728" ± 0.025	1:16777216	000	000	CONTROL CONSOLE & STUB-UP DETAILS	MOHAWK RESOURCES LTD.
26. VOLUME WEIGHT SHALL COMPLY TO AISC E-7011 CODE 3.3 PLAIN END, VASE ONLY.		26. 1/268435456" ± 0.026	1:33554432	000	000	CONTROL CONSOLE & STUB-UP DETAILS	MOHAWK RESOURCES LTD.
27. VOLUME WEIGHT SHALL COMPLY TO AISC E-7011 CODE 3.3 PLAIN END, VASE ONLY.		27. 1/536870912" ± 0.027	1:67108864	000	000	CONTROL CONSOLE & STUB-UP DETAILS	MOHAWK RESOURCES LTD.
28. VOLUME WEIGHT SHALL COMPLY TO AISC E-7011 CODE 3.3 PLAIN END, VASE ONLY.		28. 1/1073741824" ± 0.028	1:134217728	000	000	CONTROL CONSOLE & STUB-UP DETAILS	MOHAWK RESOURCES LTD.
29. VOLUME WEIGHT SHALL COMPLY TO AISC E-7011 CODE 3.3 PLAIN END, VASE ONLY.		29. 1/2147483648" ± 0.029	1:268435456	000	000	CONTROL CONSOLE & STUB-UP DETAILS	MOHAWK RESOURCES LTD.
30. VOLUME WEIGHT SHALL COMPLY TO AISC E-7011 CODE 3.3 PLAIN END, VASE ONLY.		30. 1/4294967296" ± 0.030	1:536870912	000	000	CONTROL CONSOLE & STUB-UP DETAILS	MOHAWK RESOURCES LTD.
31. VOLUME WEIGHT SHALL COMPLY TO AISC E-7011 CODE 3.3 PLAIN END, VASE ONLY.		31. 1/8589934592" ± 0.031	1:1073741824	000	000	CONTROL CONSOLE & STUB-UP DETAILS	MOHAWK RESOURCES LTD.
32. VOLUME WEIGHT SHALL COMPLY TO AISC E-7011 CODE 3.3 PLAIN END, VASE ONLY.		32. 1/17179869184" ± 0.032	1:2147483648	000	000	CONTROL CONSOLE & STUB-UP DETAILS	MOHAWK RESOURCES LTD.
33. VOLUME WEIGHT SHALL COMPLY TO AISC E-7011 CODE 3.3 PLAIN END, VASE ONLY.		33. 1/34359738368" ± 0.033	1:4294967296	000	000	CONTROL CONSOLE & STUB-UP DETAILS	MOHAWK RESOURCES LTD.
34. VOLUME WEIGHT SHALL COMPLY TO AISC E-7011 CODE 3.3 PLAIN END, VASE ONLY.		34. 1/68719476736" ± 0.034	1:8589934592	000	000	CONTROL CONSOLE & STUB-UP DETAILS	MOHAWK RESOURCES LTD.
35. VOLUME WEIGHT SHALL COMPLY TO AISC E-7011 CODE 3.3 PLAIN END, VASE ONLY.		35. 1/137438953472" ± 0.035	1:17179869184	000	000	CONTROL CONSOLE & STUB-UP DETAILS	MOHAWK RESOURCES LTD.
36. VOLUME WEIGHT SHALL COMPLY TO AISC E-7011 CODE 3.3 PLAIN END, VASE ONLY.		36. 1/274877906944" ± 0.036	1:34359738368	000	000	CONTROL CONSOLE & STUB-UP DETAILS	MOHAWK RESOURCES LTD.
37. VOLUME WEIGHT SHALL COMPLY TO AISC E-7011 CODE 3.3 PLAIN END, VASE ONLY.		37. 1/549755813888" ± 0.037	1:68719476736	000	000	CONTROL CONSOLE & STUB-UP DETAILS	MOHAWK RESOURCES LTD.
38. VOLUME WEIGHT SHALL COMPLY TO AISC E-7011 CODE 3.3 PLAIN END, VASE ONLY.		38. 1/1099511627776" ± 0.038	1:137438953472	000	000	CONTROL CONSOLE & STUB-UP DETAILS	MOHAWK RESOURCES LTD.
39. VOLUME WEIGHT SHALL COMPLY TO AISC E-7011 CODE 3.3 PLAIN END, VASE ONLY.		39. 1/2199023255552" ± 0.039	1:274877906944	000	000	CONTROL CONSOLE & STUB-UP DETAILS	MOHAWK RESOURCES LTD.
40. VOLUME WEIGHT SHALL COMPLY TO AISC E-7011 CODE 3.3 PLAIN END, VASE ONLY.		40. 1/4398046511104" ± 0.040	1:549755813888	000	000	CONTROL CONSOLE & STUB-UP DETAILS	MOHAWK RESOURCES LTD.
41. VOLUME WEIGHT SHALL COMPLY TO AISC E-7011 CODE 3.3 PLAIN END, VASE ONLY.		41. 1/8796093022208" ± 0.041	1:1099511627776	000	000	CONTROL CONSOLE & STUB-UP DETAILS	MOHAWK RESOURCES LTD.
42. VOLUME WEIGHT SHALL COMPLY TO AISC E-7011 CODE 3.3 PLAIN END, VASE ONLY.		42. 1/17592186044416" ± 0.042	1:2199023255552	000	000	CONTROL CONSOLE & STUB-UP DETAILS	MOHAWK RESOURCES LTD.
43. VOLUME WEIGHT SHALL COMPLY TO AISC E-7011 CODE 3.3 PLAIN END, VASE ONLY.		43. 1/35184372088832" ± 0.043	1:4398046511104	000	000	CONTROL CONSOLE & STUB-UP DETAILS	MOHAWK RESOURCES LTD.
44. VOLUME WEIGHT SHALL COMPLY TO AISC E-7011 CODE 3.3 PLAIN END, VASE ONLY.		44. 1/70368744177664" ± 0.044	1:8796093022208	000	000	CONTROL CONSOLE & STUB-UP DETAILS	MOHAWK RESOURCES LTD.
45. VOLUME WEIGHT SHALL COMPLY TO AISC E-7011 CODE 3.3 PLAIN END, VASE ONLY.		45. 1/140737488355328" ± 0.045	1:17592186044416	000	000	CONTROL CONSOLE & STUB-UP DETAILS	MOHAWK RESOURCES LTD.
46. VOLUME WEIGHT SHALL COMPLY TO AISC E-7011 CODE 3.3 PLAIN END, VASE ONLY.		46. 1/281474976710656" ± 0.046	1:35184372088832	000	000	CONTROL CONSOLE & STUB-UP DETAILS	MOHAWK RESOURCES LTD.
47. VOLUME WEIGHT SHALL COMPLY TO AISC E-7011 CODE 3.3 PLAIN END, VASE ONLY.		47. 1/562949953421312" ± 0.047	1:70368744177664	000	000	CONTROL CONSOLE & STUB-UP DETAILS	MOHAWK RESOURCES LTD.
48. VOLUME WEIGHT SHALL COMPLY TO AISC E-7011 CODE 3.3 PLAIN END, VASE ONLY.		48. 1/1125899906842624" ± 0.048	1:140737488355328	000	000	CONTROL CONSOLE & STUB-UP DETAILS	MOHAWK RESOURCES LTD.
49. VOLUME WEIGHT SHALL COMPLY TO AISC E-7011 CODE 3.3 PLAIN END, VASE ONLY.		49. 1/2251799813685248" ± 0.049	1:281474976710656	000	000	CONTROL CONSOLE & STUB-UP DETAILS	MOHAWK RESOURCES LTD.
50. VOLUME WEIGHT SHALL COMPLY TO AISC E-7011 CODE 3.3 PLAIN END, VASE ONLY.		50. 1/4503599627370496" ± 0.050	1:562949953421312	000	000	CONTROL CONSOLE & STUB-UP DETAILS	MOHAWK RESOURCES LTD.

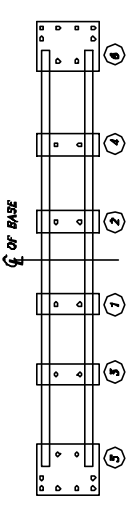
# ANCHOR DETAILS & SHIMMING



ANCHOR BOLT LOCATION DIMENSIONS AND DETAILS



1" MAXIMUM LEVELING SHIM THICKNESS SEE NOTE 10



REPRESENTATIVE TIGHTENING SEQUENCE FOR ANCHOR BOLTS TIGHTENING FROM CENTER OF BASE OUTWARD

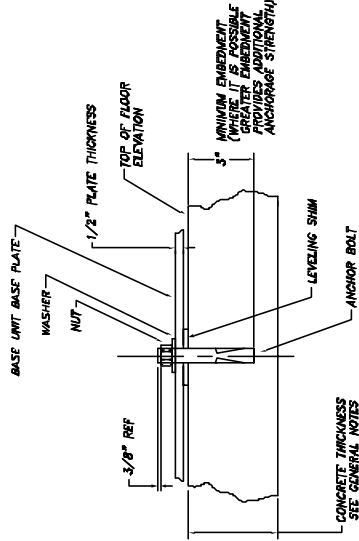
APPROVED ANCHOR BOLTS PROVIDED BY MOHAWK LIFT

ANCHOR BOLTS ARE MANUFACTURED BY:  
 WEI-T FASTENING SYSTEMS  
 2415 EAST 15TH PLACE  
 TULSA, OKLAHOMA 74104  
 PHONE 818-744-7444  
 OR 800-343-1284  
 WEB SITE WWW.WEIT.COM

ANCHORS SPECIFIED ARE THE ORIGINAL WEI-T™ EXPANSION ANCHORS, 3/4 DIA

CATALOG NUMBER	LENGTH
3480	6"
3482	8 1/2"
3410	10"

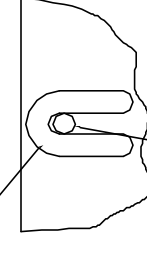
NO OTHER ANCHOR BOLT SUBSTITUTIONS ARE PERMITTED WITHOUT WRITTEN APPROVAL FROM MOHAWK RESOURCES, LTD. UNDER CERTAIN CIRCUMSTANCES EPOXY GROUTED THREADED ROD ANCHORAGE MAY BE USED BUT ANY USE OF SUCH REQUIRES WRITTEN APPROVAL OF MOHAWK RESOURCES, LTD. ANY OTHER UNAPPROVED ANCHOR BOLT PRODUCT MAY NOT HAVE THE DOCUMENTED STRENGTH TO MEET THE CERTIFICATION REQUIREMENTS OF THE AUTOMOTIVE LIFT INSTITUTE AND MAY AFFECT THE CERTIFICATION OF THE INSTALLATION.



ANCHOR BOLT DETAIL

CONCRETE THICKNESS SEE GENERAL NOTES

PLACE LEVELING SHIMS IN A STRAIGHT AND ORDERLY FASHION AT EACH ANCHOR BOLT LOCATION. USE THIN SHIMS TO FULLY FILL OUT EACH LOCATION.



TYPICAL ANCHOR BOLT

THE MAXIMUM THICKNESS OF ANY STACK OF SHIMS IS 1" SEE NOTES 9 & 10

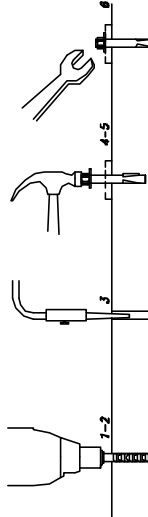
PLACEMENT OF LEVELING SHIM DETAIL

LEVELING SHIMS ARE AVAILABLE IN A RANGE OF THICKNESSES FROM 1/16" - 1/8" - & 1/4"

LEVELING SHIM DETAIL

**INSTALLATION INSTRUCTIONS**

1. DRILL THE HOLE PERPENDICULAR TO THE WORK SURFACE. TO ASSURE FULL HOLDING POWER, DO NOT FEED THE DRILL OR ALLOW THE DRILL TO Wobble.
2. DRILL THE HOLE DEEPER THAN THE INTENDED EMBEDMENT OF THE ANCHOR, BUT NOT CLOSER THAN TWO ANCHOR DIAMETERS TO THE BOTTOM (OPPOSITE) SURFACE OF THE CONCRETE.
3. CLEAN THE HOLE USING COMPRESSED AIR AND A NYLON BRUSH. A CLEAN HOLE IS NECESSARY FOR PROPER PERFORMANCE.
4. FROM THE HOLE OPENING, INSERT THE ANCHOR UNTIL CONTACT IS MADE WITH THE TOP OF THE ANCHOR AND THE BOTTOM OF THE WASHER. INSERT ANCHOR INTO HOLE.
5. TAP ANCHOR INTO HOLE WITH A 2 1/2 LBS HAMMER UNTIL WASHER RESTS SOLIDLY AGAINST FITURE.
6. TIGHTEN THE NUT TO 175 FT-LBS MAXIMUM TORQUE AND NOT LESS THAN 3 FULL TURNS, BUT NOT MORE THAN 5 TURNS PAST THE HAND TIGHT POSITION. (USE OF AN IMPACT WRENCH FOR INSTALLATION OF ANCHORS IS NOT RECOMMENDED)

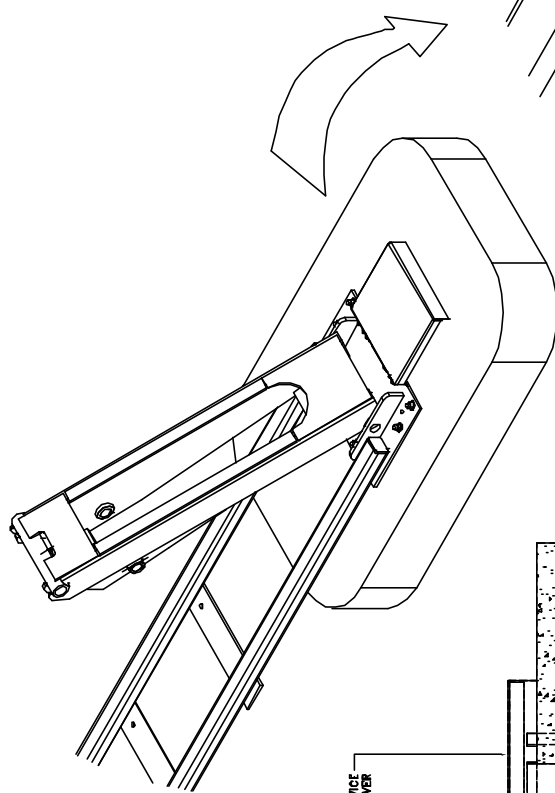


\*ALWAYS WEAR SAFETY GLASSES FOLLOW THE DRILL MANUFACTURER'S SAFETY INSTRUCTIONS. USE ONLY SO CALLED "CROW-FOOT-TIPPED" DRILL BITS MEETING ANSI B2.12.15 DIAMETER STANDARDS.

**NOTICE OF CONFIDENTIAL INFORMATION**

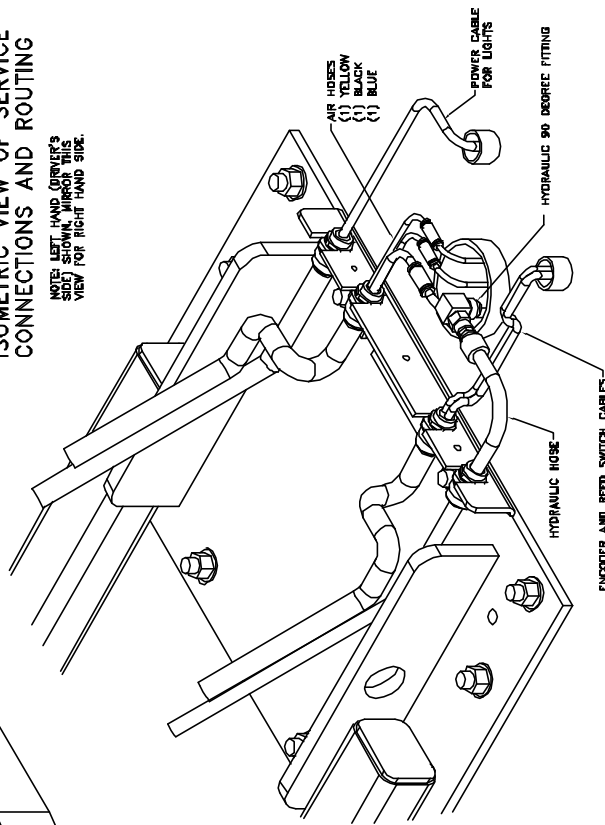
1. REMOVE ALL SWEEP COVERS & COVERS.
2. UNLESS OTHERWISE SPECIFIED, SURFACE FINISH SHALL BE AS SHOWN.
3. MILLING KEYS SHALL CONFORM TO A/S SPECIFICATIONS TO E-701X ELECTRODES OR E-701T COBE 83 FLUX CORE WIRE DRILL.

REVISED	SCALE	DRAWN BY	MOHAWK RESOURCES LTD.
DATE	DECODED	APPROVED	ANCHOR DETAILS & SHIMMING
FILE NAME	DATE	VECTORT	FROM
P-010-D-004	4/98		REVISED NUMBER
			P-010-D-004
			NET ASSEMBLY

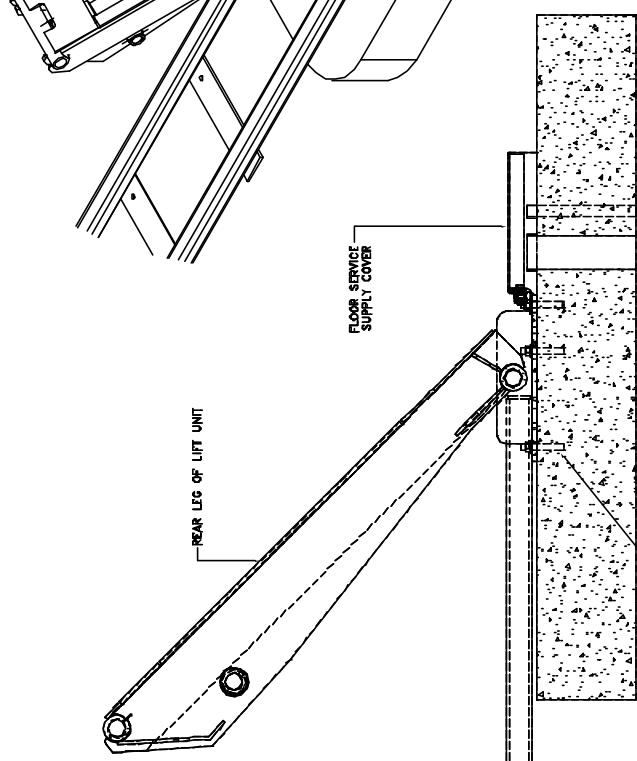


**ISOMETRIC VIEW OF SERVICE CONNECTIONS AND ROUTING**

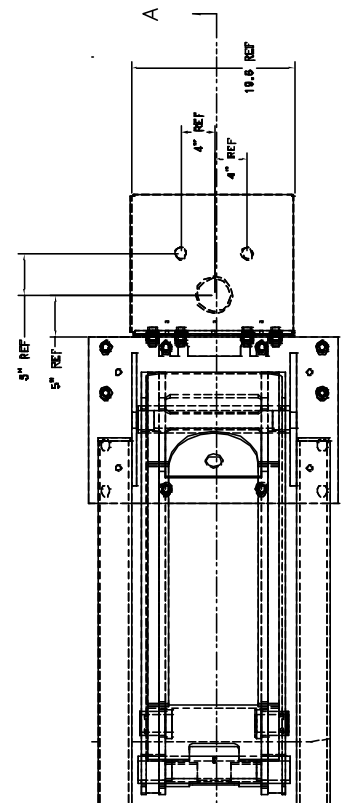
NOTE - LEFT HAND DRIVER'S VIEW FOR RIGHT HAND SIDE.



ENCODER AND REDD SWITCH CABLES



SECTION A-A



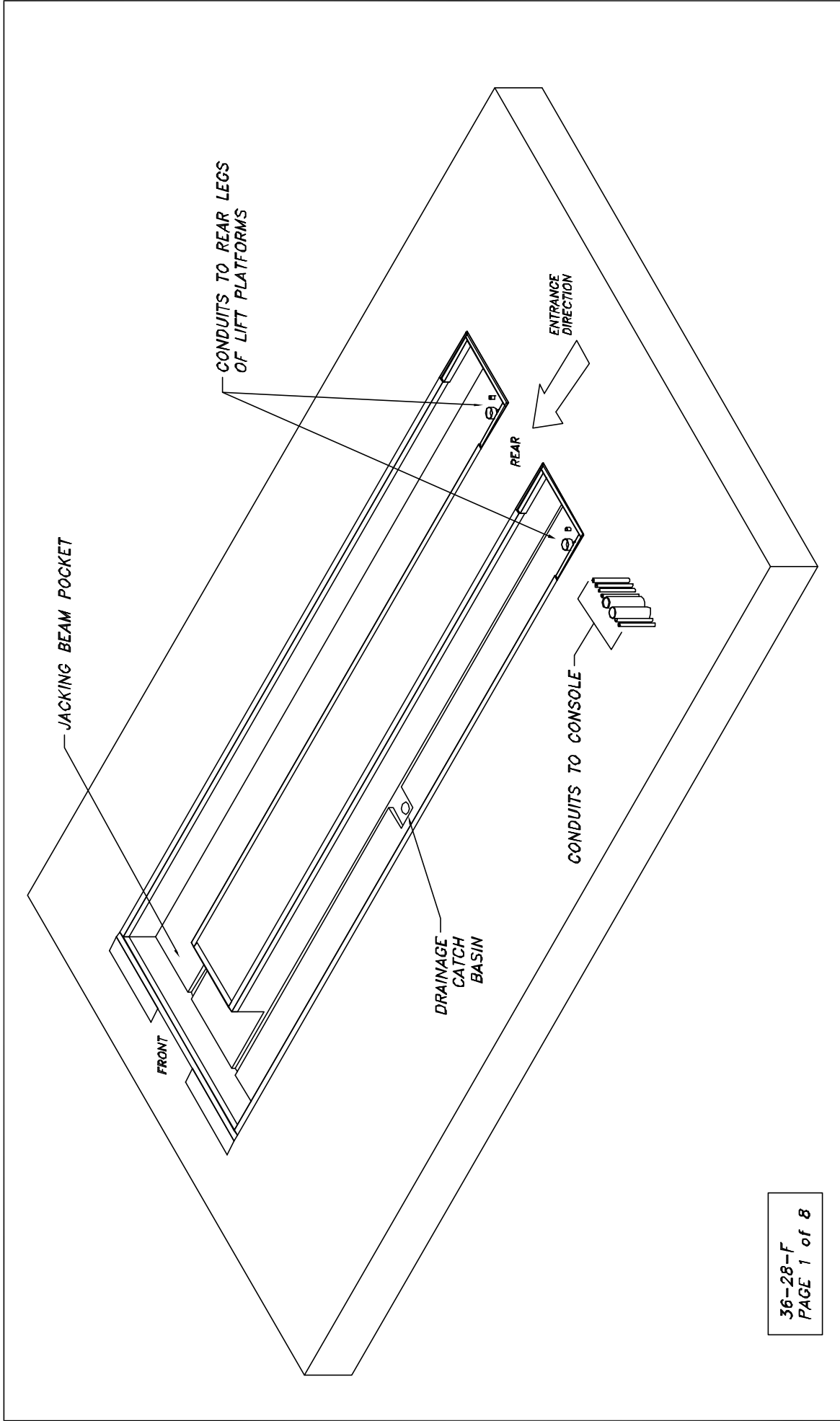
**NOTICE OF CONFIDENTIAL INFORMATION**  
 INFORMATION CONTAINED HEREIN IS CONFIDENTIAL AND PROPERTY OF MOHAWK RESOURCES LTD. IT IS TO BE KEPT SECRET AND NOT TO BE DISCLOSED TO ANY OTHER PERSON OR ENTITY WITHOUT THE WRITTEN PERMISSION OF MOHAWK RESOURCES LTD. THIS DOCUMENT IS NOT TO BE REPRODUCED OR TRANSMITTED IN ANY FORM OR BY ANY MEANS, ELECTRONIC OR MECHANICAL, INCLUDING PHOTOCOPYING, RECORDING, OR BY ANY INFORMATION STORAGE AND RETRIEVAL SYSTEM.

**NOTES**  
 1. REMOVE ALL SHARP CORNERS & EDGES.  
 2. FINISH TO BE AS FINISHED, SURFACE FINISH TO BE AS FINISHED.  
 3. WELDING METHOD SHALL CONFORM TO AWS SPECIFICATIONS FOR WELDING OF STEEL.  
 4. ALL WELDING SHALL BE DONE IN ACCORDANCE WITH THE WELDING PROCEDURE SPECIFICATION (WPS) FOR THE WELDING MATERIALS TO BE USED.

TELEPHONE: 1-800-368-1111  
 FAX: 1-800-368-1112  
 E-MAIL: SALES@MOHAWKRESOURCES.COM  
 F.L. NAME: P-010-D-008

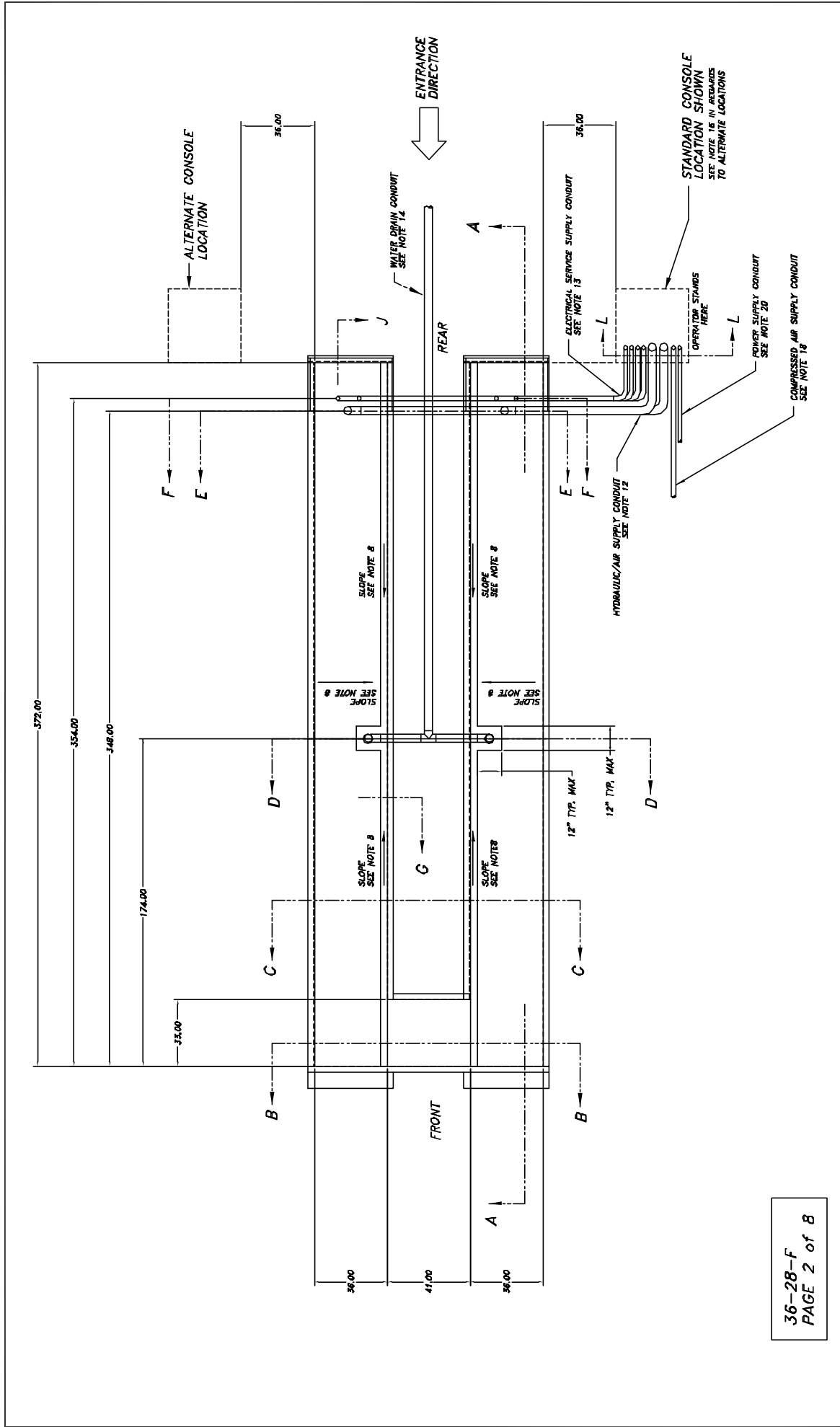
SCALE: 1/8"  
 CHECKED: 7/8  
 DATE: 4/24/08  
 NEXT ASSEMBLY:

DRAWN: P-010-D-001	APPROVED: 7/8	DATE: 7/8	SCALE: 1/8"	MOHAWK RESOURCES LTD.
CHECKED: 7/8	DATE: 7/8	SCALE: 1/8"	TITLE: Service Leg Detail	PROJECT: P-010-D-008
APPROVED: 7/8	DATE: 7/8	SCALE: 1/8"	TITLE: Service Leg Detail	PROJECT: P-010-D-008
APPROVED: 7/8	DATE: 7/8	SCALE: 1/8"	TITLE: Service Leg Detail	PROJECT: P-010-D-008



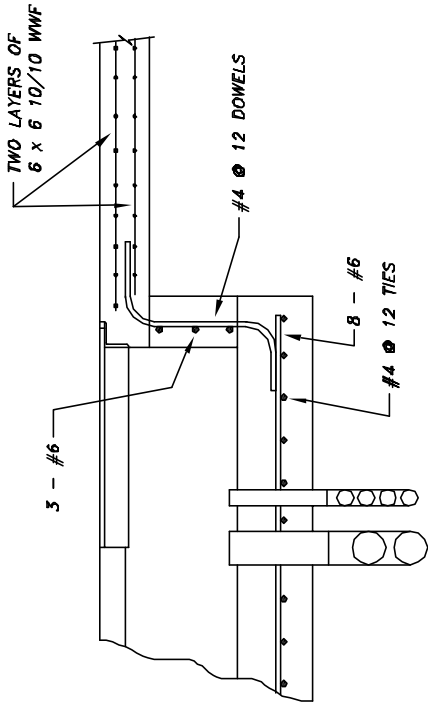
36-28-F  
PAGE 1 of 8

<b>NOTICE OF CONFIDENTIAL INFORMATION</b>		<b>MOHAWK RESOURCES LTD.</b>	
<p>PROPRIETARY INFORMATION. THIS DRAWING IS THE PROPERTY OF MOHAWK RESOURCES LTD. IT IS TO BE KEPT IN STRICTLY CONFIDENTIAL AND NOT TO BE REPRODUCED OR TRANSMITTED IN ANY FORM OR BY ANY MEANS, ELECTRONIC OR MECHANICAL, INCLUDING PHOTOCOPYING, RECORDING, OR BY ANY INFORMATION STORAGE AND RETRIEVAL SYSTEM, WITHOUT THE WRITTEN PERMISSION OF MOHAWK RESOURCES LTD.</p>		<p><b>FILE NAME</b> P-2010-0-001</p>	
<p><b>NOTES:</b></p> <p>1. REMOVE ALL SHARP CORNERS &amp; EDGES.</p> <p>2. UNLESS OTHERWISE SPECIFIED, SURFACE FINISH SHALL BE AS SHOWN.</p> <p>3. WELDING METHOD SHALL CONFORM TO AISC SPECIFICATIONS TO C-708 ELECTRODE OR C-710 CODE. 50 FLUX (SEE VISC. DMT).</p>		<p><b>TOLERANCES</b></p> <p>ANGULAR ± 1°</p> <p>LINEAR ± .001</p> <p>POSITIONAL ± .005</p> <p>AS PER DIMENSIONAL BOOK</p>	
<p><b>SCALE</b> 3/8"</p>		<p><b>DATE</b> 1/27/08</p>	
<p><b>APPROVED</b></p>		<p><b>WEIGHT</b> LB.</p>	
<p><b>DESIGNED BY</b> P-2010-4-001</p>		<p><b>NEXT ASSEMBLY</b> LB.</p>	
<p><b>CHECKED</b></p>		<p><b>FRON</b></p>	

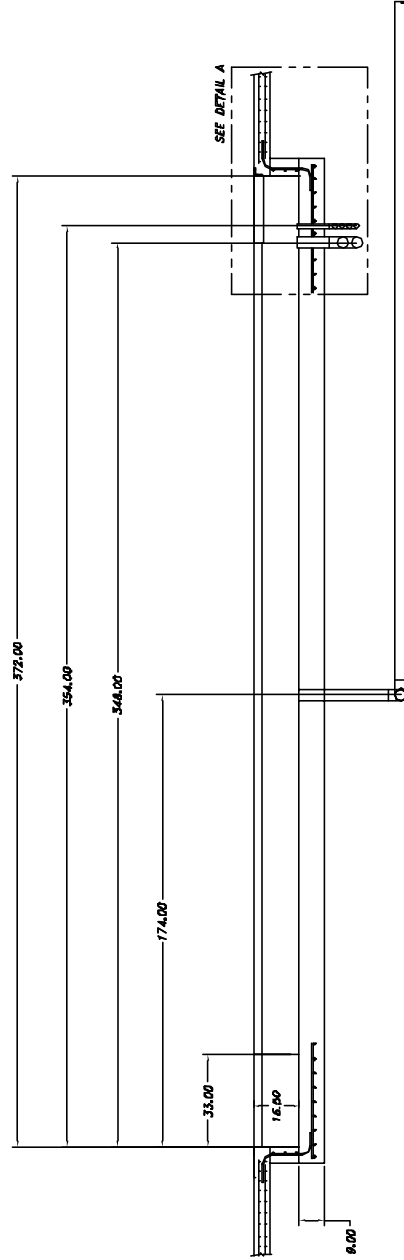


36-28-F  
PAGE 2 of 8

NOTICE OF CONFIDENTIAL INFORMATION		TELEPHONE		DRAWN		MOHAWK RESOURCES LTD.		
1. UNLESS OTHERWISE SPECIFIED, SURFACE FINISH TO BE AS SHOWN. 2. UNLESS OTHERWISE SPECIFIED, SURFACE FINISH TO BE AS SHOWN. 3. SPECIFICATIONS TO E-TONK ELECTRONICS OR E-7000 CORE 3/3 FLUX CORE WIRE ONLY.		P-2010-M-001 P-2010-D-001	P-2010-M-001 P-2010-D-001	3/2/06 1/27/06	3/2/06 1/27/06	APPROVED CHECKED DATE	TITLE PART NUMBER PART NUMBER PART NUMBER	WEIGHT L.B. FEET L.B.
NEXT ASSEMBLY P-2010-D-001		FILE NAME P-2010-D-001		DATE 1/27/06		DRAWN APPROVED CHECKED DATE		MOHAWK RESOURCES LTD. TITLE PART NUMBER PART NUMBER PART NUMBER



DETAIL A



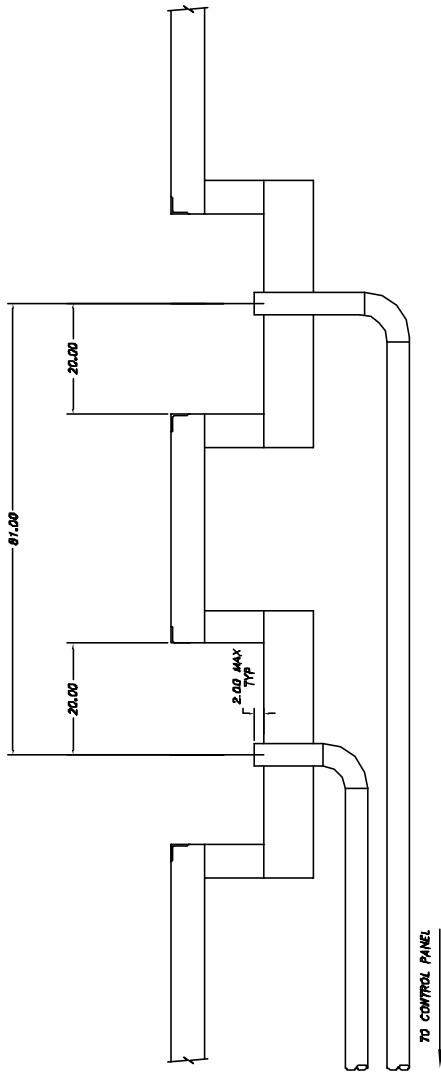
SECTION A-A

36-28-F  
PAGE 3 of 8

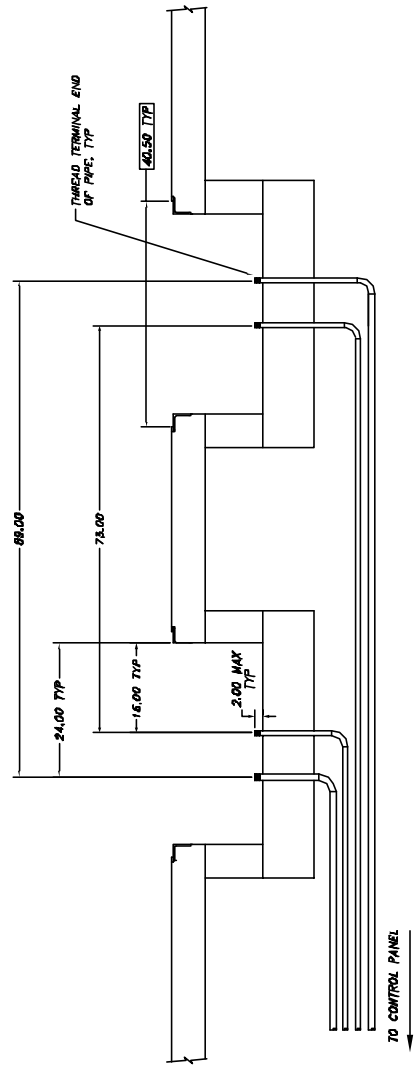
<b>NOTICE OF CONFIDENTIAL INFORMATION</b>		<b>NOTES</b>		<b>TO EXAMINE:</b>		<b>DATE:</b>		<b>APPROVED:</b>		<b>DATE:</b>		<b>PROJECT:</b>			
INFORMATION CONTAINED HEREIN IS CONFIDENTIAL AND INTENDED FOR THE USE OF THE CLIENT. IT IS NOT TO BE DISSEMINATED TO OTHERS WITHOUT THE WRITTEN PERMISSION OF THE PROJECT MANAGER.		1. REMOVE ALL SHARP CORNERS & EDGES. 2. UNLESS OTHERWISE SPECIFIED, SURFACE SHALL BE FINISHED TO CONFORM TO AASHTO M 208. 3. VERIFY MODULAR SHALL CONFORM TO AASHTO M 208. 4. VERIFY MODULAR SHALL CONFORM TO AASHTO M 208. E-7011 CODE 33 FLUX CURE WIRE ONLY.		1. L 2. S 3. S 4. S 5. S 6. S 7. S 8. S 9. S 10. S 11. S 12. S 13. S 14. S 15. S 16. S 17. S 18. S 19. S 20. S 21. S 22. S 23. S 24. S 25. S 26. S 27. S 28. S 29. S 30. S 31. S 32. S 33. S 34. S 35. S 36. S 37. S 38. S 39. S 40. S 41. S 42. S 43. S 44. S 45. S 46. S 47. S 48. S 49. S 50. S 51. S 52. S 53. S 54. S 55. S 56. S 57. S 58. S 59. S 60. S 61. S 62. S 63. S 64. S 65. S 66. S 67. S 68. S 69. S 70. S 71. S 72. S 73. S 74. S 75. S 76. S 77. S 78. S 79. S 80. S 81. S 82. S 83. S 84. S 85. S 86. S 87. S 88. S 89. S 90. S 91. S 92. S 93. S 94. S 95. S 96. S 97. S 98. S 99. S 100. S		1/27/06		1/27/06		P-2010-A-001		P-2010-D-001		P-2010-B-001	
MOHAWK RESOURCES LTD. TITLE: P11 DRAWINGS & SECTIONS FROM: P11 36-28-F (7/15/11)		MOHAWK RESOURCES LTD. TITLE: P11 DRAWINGS & SECTIONS FROM: P11 36-28-F (7/15/11)		MOHAWK RESOURCES LTD. TITLE: P11 DRAWINGS & SECTIONS FROM: P11 36-28-F (7/15/11)		MOHAWK RESOURCES LTD. TITLE: P11 DRAWINGS & SECTIONS FROM: P11 36-28-F (7/15/11)		MOHAWK RESOURCES LTD. TITLE: P11 DRAWINGS & SECTIONS FROM: P11 36-28-F (7/15/11)		MOHAWK RESOURCES LTD. TITLE: P11 DRAWINGS & SECTIONS FROM: P11 36-28-F (7/15/11)		MOHAWK RESOURCES LTD. TITLE: P11 DRAWINGS & SECTIONS FROM: P11 36-28-F (7/15/11)			







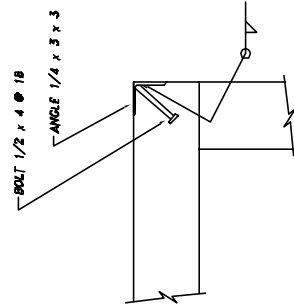
SECTION E-E



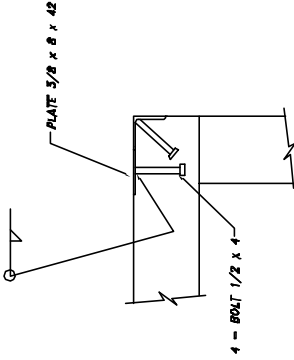
SECTION F-F

36-28-F  
PAGE 6 of 8

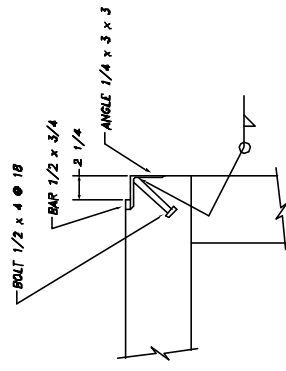
<p>NOTICE OF CONFIDENTIAL INFORMATION</p> <p>THIS DRAWING IS THE PROPERTY OF MOHAWK RESOURCES LTD. IT IS TO BE USED ONLY FOR THE PROJECT AND NOT REPRODUCED OR TRANSMITTED IN ANY FORM OR BY ANY MEANS, ELECTRONIC OR MECHANICAL, INCLUDING PHOTOCOPYING, RECORDING, OR BY ANY INFORMATION STORAGE AND RETRIEVAL SYSTEM, WITHOUT THE WRITTEN PERMISSION OF MOHAWK RESOURCES LTD.</p>		<p>REVISIONS</p> <p>1.1 REVISION 1.1 DATE: 1/27/06</p>	<p>DATE: 3/25/06</p> <p>CHECKED: [ ]</p> <p>DATE: 1/27/06</p>	<p>SCALE: 3/32"</p> <p>APPROVED: [ ]</p> <p>DATE: 1/27/06</p>	<p>PROJECT: P-2010-A-001</p> <p>FILE NAME: P-2010-D-001</p>	<p>MOHAWK RESOURCES LTD.</p> <p>TITLE: FIT DRAWINGS &amp; SECTIONS FOR 36-28-F (1/25/06)</p>	<p>PROJECT NUMBER: P-2010-A-001</p> <p>ISSUE NUMBER: P-2010-D-001</p>
--	--	--	---	---	---	--	---



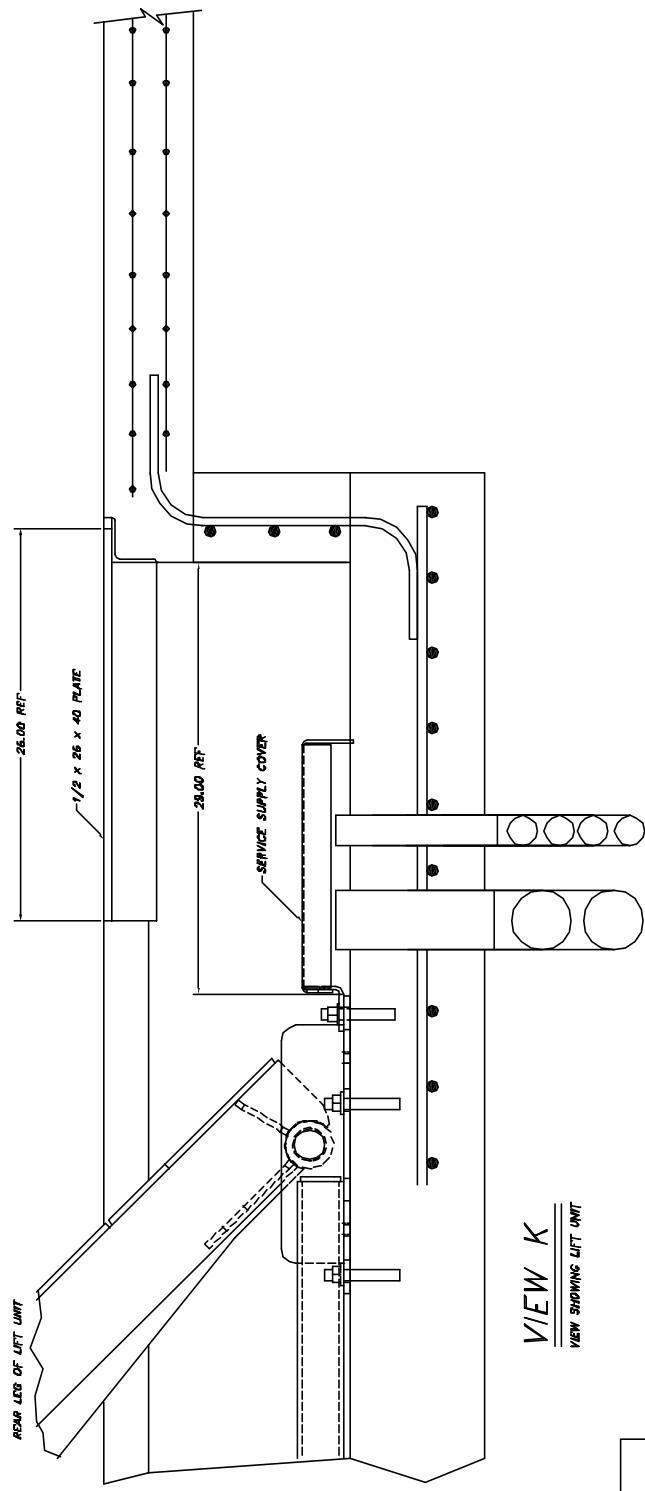
SECTION G



SECTION H



SECTION J



VIEW K  
VIEW SHOWING LIFT UNIT

36-28-F  
PAGE 7 of 8

<p>NOTICE OF CONFIDENTIAL INFORMATION</p> <p>THIS DRAWING IS THE PROPERTY OF MOHAWK RESOURCES LTD. IT IS TO BE USED ONLY FOR THE PROJECT AND SHALL NOT BE REPRODUCED OR TRANSMITTED IN ANY FORM OR BY ANY MEANS, ELECTRONIC OR MECHANICAL, INCLUDING PHOTOCOPYING, RECORDING, OR BY ANY INFORMATION STORAGE AND RETRIEVAL SYSTEM.</p>		<p>NOTES</p> <p>1. FINISH TO BE PER SPEC UNLESS OTHERWISE SPECIFIED. SURFACE FINISH TO BE PER SPEC UNLESS OTHERWISE SPECIFIED.</p> <p>2. UNLESS OTHERWISE SPECIFIED, SURFACE FINISH TO BE PER SPEC UNLESS OTHERWISE SPECIFIED.</p> <p>3. SPECIFICATIONS TO C-700K ELECTRODES OR EQUIVALENTS TO BE USED IN ALL CASES.</p> <p>4. C-700K CODE 33 FLUX CORE WIRE ONLY.</p>	<p>REVISIONS</p> <p>NO. 1</p> <p>DATE 1/27/08</p> <p>BY [Signature]</p> <p>APPROVED BY [Signature]</p>	<p>DATE 1/27/08</p> <p>WEIGHT</p> <p>LIB.</p>	<p>DESIGNED</p> <p>DATE 1/27/08</p> <p>WEIGHT</p> <p>LIB.</p>	<p>APPROVED</p> <p>DATE 1/27/08</p> <p>WEIGHT</p> <p>LIB.</p>	<p>DRAWN</p> <p>DATE 1/27/08</p> <p>WEIGHT</p> <p>LIB.</p>	<p>P-2010-A-001</p> <p>NEXT ASSEMBLY</p>	<p>MOHAWK RESOURCES LTD.</p> <p>TITLE 36-28-F (ALISH)</p> <p>FOR DRAWINGS &amp; SPECIFICATIONS</p> <p>PROJECT NO. P-2010-D-001</p>
---	--	--	--	---	---	---	--	--	--



LIFT DATA TABLE

MOHAWK RESOURCES, LTD  
 PARALLELOGRAM LIFT MODEL  
 36-28-FLUSH

LIFT UNIT DATA	
MAXIMUM LOAD CAPACITY (LBS)	36,000
ANCHORAGE	---
ANCHOR BOLT DIAMETER (IN.)	3/4"
TOTAL NUMBER OF ANCHOR BOLTS	48
BOLT PATTERN	SEE ANCHOR DETAILS
ANCHOR BOLT SETTING TORQUE	N/A - SEE ANCHOR DETAILS
MINIMUM EMBEDMENT LENGTH (IN.)	3.00
MINIMUM CONCRETE THICKNESS (IN.)	---
HYDRAULIC	SEE P.T. DRAWINGS
RESERVOIR CAPACITY (GAL.)	50 TOTAL
OIL TYPE	DEXRON III (AIF)
ELECTRICAL	---
MOTOR HORSEPOWER	20
208/230 V 3 PH	60 AMPERE
or 460 V 3 PH	30 AMPERE
CONTROL CIRCUIT TRANSFORMER 1000 VA	7.69 AMP
24 VDC POWER SUPPLY	4.8 AMP
LIGHT FIXTURES (OPTIONAL LIGHTING KIT)	6
SHOP AIR	---
AIR PRESSURE (PSI)	85 To 100
AIR VOLUME - LIFT (CFM)(LOCKS)	5
AIR VOLUME - OPTIONAL ROLLING JACK (CFM)	25 EACH
AIR VOLUME - OPTIONAL SHOP AIR KIT (CFM)	20
AIR VOLUME - TOTAL REQ'D CAPACITY (GFM)	30 MINIMUM
AIR VOLUME - TOTAL REQ'D CAPACITY (GFM)	50 SUGGESTED

REQUIRED MATERIAL LIST

MATERIALS SHOWN ON THIS LIST SHALL BE USED WITHOUT  
 SUBSTITUTION UNLESS SPECIFICALLY APPROVED IN WRITING BY  
 MOHAWK RESOURCES, LTD.

ITEM	QTY	DESCRIPTION	MATERIAL
12	1	LOCKOUT/TAGOUT DISCONNECT BOX	PER LOCAL ELECTRICAL CODES
11*	AR	LEVELING SHIMS	1/16" 1/8" 1/4" THICK
10*	48	3/4" x 5" ANCHOR BOLT ASSEMBLY	WE-IT - WEDGE ANCHORS
9	4	1" SEAL BARRIER	CROUSE - HINDS EYS3
8	4	1-3/4" REDUCER BUSHING	CROUSE - HINDS RE32
7	4	1" SCH 40-90 DEG ELBOW	CROUSE - HINDS EL3
6*	1	JUNCTION BOX (IN CONSOLE)	STEEL
5	AR	SEALTITE FLEXIBLE CONDUIT	METAL CORE
4	AR	1" RIGID CONDUIT	STEEL
3	1	FILTER/LUBRICATOR/REGULATOR, DRYER SHUTOFF	
2	AR	4" SCH 40 STREET ELBOW	STEEL or PVC
1	AR	4" SCH 40 PIPE	STEEL or PVC
ITEM	QTY	DESCRIPTION	MATERIAL
		* ITEMS SUPPLIED BY MOHAWK WITH THE LIFT UNIT	

NOTICE OF CONFIDENTIAL INFORMATION  
 THIS DOCUMENT CONTAINS TRADE SECRETS AND CONFIDENTIAL INFORMATION OF MOHAWK RESOURCES, LTD. IT IS THE PROPERTY OF MOHAWK RESOURCES, LTD. AND IS TO BE USED ONLY FOR THE PURPOSES SPECIFIED HEREIN. IT IS NOT TO BE REPRODUCED, COPIED, OR DISCLOSED TO ANY OTHER PARTY WITHOUT THE WRITTEN PERMISSION OF MOHAWK RESOURCES, LTD.

NOTES:  
 1. REMOVE ALL SHARP CORNERS & EDGES.  
 2. UNLESS OTHERWISE SPECIFIED, SURFACE FINISH SHALL BE AS SHOWN.  
 3. WELDING SHALL BE PERFORMED TO AWS SPECIFICATIONS TO E-700 ELECTRODES OR E-700T CODE 53 PLUS CORE WIRE ONLY.  
 E-700T CODE 53 PLUS CORE WIRE ONLY.

REVISIONS  
 1. 1/27/06  
 2. 1/27/06  
 3. 1/27/06  
 FILE NAME  
 P-2010-0-002

SCALE  
 CHECKED  
 DATE 1/27/06

APPROVED  
 WEIGHT  
 LA

MOHAWK RESOURCES LTD.  
 TITLE  
 LIFT DATA  
 DRAWING NUMBER  
 P-2010-0-002

**GENERAL NOTES**

**NOTE 1**  
CONCRETE USED FOR THE BASE AND THE SIDE WALLS OF EACH TRENCH AND ANY OTHER NEW CONCRETE WHICH IS USED FOR THIS INSTALLATION MAY HAVE A MINIMUM STRENGTH OF  $F'c=2,500$  psi, A STRENGTH OF  $F'c=4,000$  psi IS RECOMMENDED WHERE POSSIBLE.

**NOTE 2**  
CONCRETE USED FOR THE BASE AND SIDEWALLS OF THE TRENCH AREAS SHALL REACH ITS FULL 28 DAY  $F'c$  STRENGTH BEFORE THE LIFT AND THE ANCHOR BOLTS ARE INSTALLED.

**NOTE 3**  
CONCRETE REINFORCEMENT SIZES AND REINFORCEMENT SPECIFICATION FOR THE BASE OF EACH TRENCH SHALL BE DETERMINED BY AN ENGINEER OR ARCHITECT (AT THE EXPENSE OF THE PURCHASER) AND SHOULD BE DETERMINED CONSIDERING THE LOCAL SOIL CONDITIONS AND THE APPLIED LOADING. AS A MINIMUM, GRADE 60 REINFORCEMENT OF THE SIZE AND SPACING SHOWN ON THE DRAWINGS SHALL BE USED.

**NOTE 4**  
CONCRETE REINFORCEMENT SPECIFICATIONS FOR THE FLOOR AREA AROUND THE TRENCHES SHALL BE DETERMINED BY AN ENGINEER OR ARCHITECT (AT THE EXPENSE OF THE PURCHASER) AND SHOULD BE DETERMINED CONSIDERING THE LOCAL SOIL CONDITIONS AND THE APPLIED LOADING. AS A MINIMUM, TWO LAYERS OF GRADE 60, 6X8-10/10 WELDED WIRE FABRIC SHOULD BE USED IN THE VICINITY OF THE LIFT UNIT AND BETWEEN THE TRENCHES.

**NOTE 5**  
THE REINFORCING STEEL USED IN THE BASE OF THE TRENCHES SHALL BE INSTALLED SO AS TO NOT INTERFERE WITH THE ANCHOR BOLTS USED TO ATTACH THE LIFT UNIT.

**NOTE 6**  
WELT FASTENING SYSTEMS, AT WEDGE ANCHORS ARE PROVIDED WITH THE LIFT FOR ANCHORING THE LIFT UNIT TO THE FLOOR SYSTEM, THE NUMBER AND THE SIZE OF ANCHOR BOLTS SPECIFIED IN THE DRAWING MUST BE USED TO ATTACH THE LIFT UNIT. ANCHOR BOLTS OF FULL LENGTH MUST BE USED IN ALL LOCATIONS PROVIDED ON THE BASE OF THE LIFT UNIT.

**NOTE 7**  
CARE MUST BE TAKEN TO ENSURE THAT THE SIDE WALLS OF THE TRENCH ARE PARALLEL AND STRAIGHT. APPROXIMATELY 1 1/2 OF CLEARANCE IS PROVIDED ALONG THE SIDES OF THE RUNWAYS.

**NOTE 8**  
SLOPE THE BOTTOM OF THE TRENCH 1/16 INCH PER FOOT TOWARD THE DRAINAGE CHANNEL. SLOPE THE DRAINAGE CHANNEL 1/16 INCH PER FOOT TOWARD THE CATCH BASIN.

**NOTE 9**  
CARE MUST BE TAKEN TO ENSURE THAT THE BASE OF THE TRENCH AREAS ARE AT THE PROPER ELEVATION. A MAXIMUM OF ONE INCH ADJUSTMENT (SHIMMING) IS PERMITTED FOR INSTALLATION LEVELING.

**NOTE 10**  
WHERE MORE THAN 3/4 INCH OF SHIM LEVELING IS REQUIRED, FULL SUPPORT PLATE CONTACT SHIMS ARE AVAILABLE AT ADDITIONAL COST. THE FULL CONTACT SHIM PLATES SHALL THEN BE ACCURATELY LEVELLED USING INDIVIDUAL ANCHOR BOLT SHIMS. INDIVIDUAL ANCHOR BOLT SHIMS ARE AVAILABLE IN A RANGE OF THICKNESSES FROM 1/16 INCH TO 1/4 INCH.

**NOTE 11**  
NO EMBEDDED PLUMBING, TUBES, CONDUITS OR OTHER ITEMS, EXCEPT THE LIFT UNIT SERVICE LEG CONDUITS SHALL BE CLOSER THAN 16 INCHES FROM ANY ANCHOR BOLT. ALSO, THE SERVICE LEG CONDUITS SHALL BE INSTALLED ACCURATELY IN THE LOCATIONS SHOWN IN THE PLAN AND DETAIL VIEWS TO MINIMIZE THE EFFECT ON THE ANCHORAGE.

**NOTE 12**  
PROVIDE TWO, 4 INCH SCH 40 PVC PIPE AS A HYDRAULIC-PNEUMATIC SERVICE SUPPLY CONDUIT RUNNING FROM THE POWER UNIT TO EACH SERVICE LEG.

**NOTE 13**  
PROVIDE 4, 1 INCH SCH 40 STEEL CONDUITS AS ELECTRICAL SERVICE SUPPLY RUNNING FROM THE POWER UNIT TO THE SERVICE LEGS. THESE CONDUITS SHALL BE INSTALLED AS SHOWN ON THE SECTION VIEWS AND MUST BE INSTALLED ACCORDING TO APPLICABLE ELECTRICAL CODES.

**NOTE 14**  
ONE 4 INCH SCH 40 PVC DRAIN PIPE SHOULD BE PROVIDED TO CARRY DRAINAGE FROM THE CATCH BASINS TO AN OIL-WATER SEPARATOR. THIS PIPE SHOULD SLOPE A MINIMUM OF 1/16 INCH PER FOOT TOWARD THE DESTINATION.

**NOTE 15**  
PROVIDE TEMPORARY CAPS FOR ALL CONDUITS AND EMBEDDED PIPES. IT IS RECOMMENDED TO LEAVE PULL ROPES IN CONDUITS FOR EASE OF LIFT INSTALLATION.

**NOTE 16**  
THE CONTROL CONSOLE MUST BE LOCATED IN THE VICINITY OF THE LIFT. IT SHOULD BE PLACED FAR ENOUGH AWAY FROM THE LIFT TO ALLOW FOR ACTIVITIES AROUND THE LIFT. THE ENCLOSED DRAWINGS SHOW THE CONSOLE IN A STANDARD POSITION. THE CONTROL CONSOLE MAY BE LOCATED ON EITHER SIDE AND ANYWHERE ALONG THE LENGTH OF THE LIFT, BUT ANY DEVIATIONS FROM THE ENCLOSED DRAWINGS MAY REQUIRE LONGER CABLES, HOSES, CONDUIT, ETC. AT ADDITIONAL EXPENSE TO THE PURCHASER.

**NOTE 17**  
THE LIFT UNIT REQUIRES CLEAN DRY COMPRESSED AIR AT THE PRESSURE AND VOLUME SHOWN ON THE LIFT UNIT DATA TABLE. A FILTER/LUBRICATOR/REGULATOR IS SUPPLIED WITH THE LIFT UNIT FOR THE LOCKING SYSTEM ONLY. A FILTER/LUBRICATOR/REGULATOR, AIR DRYER AND SHUTOFF VALVE MUST BE PROVIDED FOR THE LIFT UNIT TO OPERATE THE OPTIONAL ACCESSORIES. THE REQUIRED VOLUME OF AIR SHOWN IN THE LIFT UNIT DATA TABLE RECOGNIZES THAT NOT MORE THAN ONE AUXILIARY AIR CONSUMER WILL BE USED SIMULTANEOUSLY.

**NOTE 18**  
PROVIDE ONE, 1 INCH SCH 40 RIGID STEEL CONDUIT AS A COMPRESSED AIR SUPPLY. THIS CONDUIT IS SHOWN UNDERGROUND, ALTERNATIVELY IT MAY BE BROUGHT TO THE CONTROL PANEL OVERHEAD DEPENDING ON CUSTOMER PREFERENCE. IF BROUGHT OVERHEAD, PROVIDE FLEX CONDUIT CONNECTING THE TERMINAL END OF THE CONDUIT TO THE CONTROL CONSOLE.

**NOTE 19**  
THE LIFT UNIT REQUIRES A HIGH VOLTAGE POWER SOURCE. A LOCKOUT/TAGOUT ELECTRICAL DISCONNECT BOX MUST BE PROVIDED FOR THE POWER SOURCE. THE LOCKOUT/TAGOUT DISCONNECT BOX MUST BE INSTALLED ACCORDING TO APPLICABLE ELECTRICAL CODES. THIS ELECTRICAL DISCONNECT IS TO BE PROVIDED BY OTHERS.

**NOTE 20**  
PROVIDE ONE, 1 INCH SCH 40 RIGID STEEL CONDUIT AS ELECTRICAL SERVICE SUPPLY RUNNING FROM THE BUILDING POWER SOURCE TO THE CONTROL CONSOLE. THIS CONDUIT IS SHOWN UNDERGROUND, ALTERNATIVELY IT MAY BE BROUGHT TO THE CONTROL PANEL OVERHEAD DEPENDING ON CUSTOMER PREFERENCE. PROVIDE A LOCKOUT/TAGOUT ELECTRICAL DISCONNECT BOX WITHIN SIGHT AND AS CLOSE TO THE CONTROL CONSOLE AS IS PRACTICAL. THIS ELECTRICAL SUPPLY CONDUIT AND DISCONNECT BOX MUST BE INSTALLED ACCORDING TO LOCAL ELECTRICAL CODE REQUIREMENTS.

**NOTE 21**  
ALL FLOOR REQUIREMENTS ARE BASED ON A CONCRETE SLAB THAT IS ON GRADE (SUPPORTED BY SOIL). ANY OTHER TYPE OF INSTALLATION INVOLVING A SLAB NOT ON GRADE (I.E. SLAB SUPPORTED BY PYLONS, SECOND STORY SLAB, ETC.) MUST BE REVIEWED & ANALYZED FOR SUITABILITY BY THE BUILDING ARCHITECT, AT THE EXPENSE OF OTHERS.

**NOTICE OF CONFIDENTIAL INFORMATION**  
THIS DRAWING AND ALL INFORMATION CONTAINED HEREIN IS THE PROPERTY OF MOHAWK RESOURCES LTD. IT IS TO BE USED ONLY FOR THE PROJECT AND NOT TO BE REPRODUCED, COPIED, OR TRANSMITTED IN ANY FORM OR BY ANY MEANS, ELECTRONIC OR MECHANICAL, INCLUDING PHOTOCOPYING, RECORDING, OR BY ANY INFORMATION STORAGE AND RETRIEVAL SYSTEM. THE USER SHALL BE RESPONSIBLE FOR OBTAINING ALL NECESSARY PERMITS AND APPROVALS FROM THE APPROPRIATE AGENCIES.

TOLERANCES: DIMENSIONS: ± 1/16" HOLE DIA: ± .004" RADIUS: ± .004" CHAMFER: ± .004"		P-1010-A-001	SCALE: 1/8" = 1'-0"	DRAWN: PWT/089 CHECKED: [ ] APPROVED: [ ]	MOHAWK RESOURCES LTD. TITLE: FLUSH LIFTS INSTALLATION GENERAL NOTES
FILE NAME: P-1010-D-006 FILE NO.: 3/03		MECH. ASSEMBLY	DATE: 3/03	MED:IT	DRAWING NUMBER: P-1010-D-006

**FLUSH LIFTS ONLY**

D-size